



INDUSTRIAL LIGHTING
TUBA IP69K

IP
69K(lm/W)
194UGR
<19

TUBA IP69K



Created to meet the most demanding working conditions – there, where light durability, tightness and reliability are key

TUBA IP69K is a professional led luminaire designed to work in extreme conditions. It combines the highest class of tightness with exceptional durability and modern design. Thanks to advanced technology and resistance to water, dust and detergents, it is perfect for the food, chemical and pharmaceutical

industries. Its design minimizes the risk of failure and extends the maintenance-free cycle. The energy-saving light source guarantees high efficiency with low energy consumption. TUBA IP69K is a reliable solution where other luminaires fail.

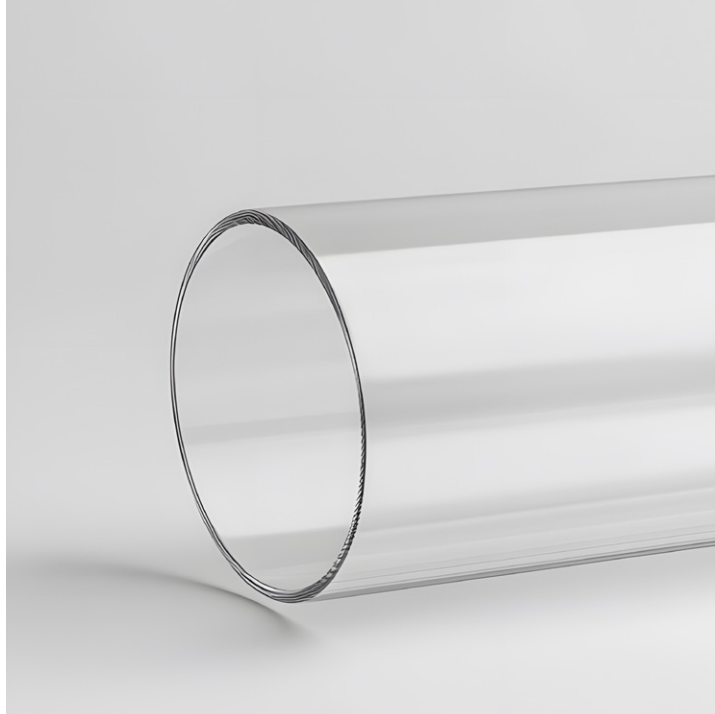
HIGH LEAKPROOF- NESS

TUBA IP69K lamp has been designed for places where standard solutions fail. Resistant to dust, moisture and strong water jets (also at a pressure of 100 bar at 80°C) – it works where hygiene and durability are a priority. This is a guarantee of reliability in industrial environments with an increased risk of pollution.

TUBA IP69K meets the most stringent tightness standards, making it an ideal choice for demanding applications. Thanks to the IP69K protection class, the lamp withstands intensive pressure washing, including hot water with detergents. Its resistance to dust and moisture ensures uninterrupted operation in production plants, cold stores, halls and warehouses.



Three materials
lampshades - glass
borosilicate,
PMMA and PC



Stainless
steel endcaps
eliminating the risk
of corrosion



The luminaire meets
the IP68 standard, it
can be completely
submerged in water
to a depth of 1.5
meters for 30 minutes.



FEATURES SPECIAL

Designed for environments where there is no room for compromise. IP69K TUBA combines exceptional durability with the highest quality of light.

TUBA IP69K is an airtight led luminaire designed to work in the harshest conditions. Its construction based on high-end materials ensures longevity and reliability of operation. It is perfect for applications in the food, pharmaceutical and wherever hygiene and durability are key.

- Degree of tightness IP69K – resistance to water, dust and high-pressure washing
- Extremely resistant borosilicate glass provides exceptional durability even in chemically aggressive environments
- Polycarbonate housing – will increase the degree of protection against mechanical damage IK10
- Ability to work in a wide range of temperatures
- Energy-saving led technology – very high luminous efficiency up to 194lm/W and energy class A
- A version with an emergency module is available
- Version The IP69K Endura tube is resistant to ambient temperatures of 50 and 70°C

LIGHTING WITHOUT GLARE

TUBA IP69K is designed to provide maximum visibility without glare. Thanks to the use of a well-thought-out optical system, the light is uniform and user-friendly. This is crucial in places where precision and long working time in artificial lighting matter.

- Glare-reducing optics – high visual comfort
- Even light distribution without harsh shadows
- Flicker-free – stable lighting at all times
- Minimizing eye fatigue with prolonged work
- Ideal for workstations that require precision and focus
- Better health and safety conditions by eliminating glare from working surfaces
- The lamp is offered in versions with seven different light distributions



UGR
< 19
< 22
< 25



DESIGN

TUBA IP69K combines functionality with aesthetics, offering a modern design adapted to industrial standards. Its simple, cylindrical form makes it fit perfectly into various spaces – from production to laboratory. The thoughtful design makes it easy to install and emphasizes the professional character of the interior.

- Slim, cylindrical form with a universal character
- Modern aesthetics while maintaining industrial requirements
- Integrated design with no visible joints
- A discreet look that fits modern workspaces
- Housing made of high-quality materials resistant to dirt
- Easy to keep clean with a smooth surface

WIDE APPLICATION

TUBA IP69K is designed to meet the diverse requirements of various industries. Its durability, tightness and modern design make it perfect for many types of facilities.



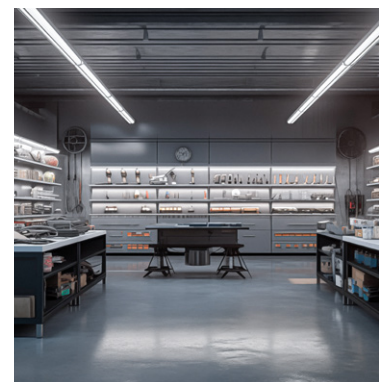
Industrial and storage halls

It is perfect for industrial and warehouse halls, providing reliable and effective lighting even in the most demanding conditions.



Cool and freeze storage

It copes perfectly in environments with high humidity, negative temperatures and aggressive fumes – from cold stores and freezers to mushroom mills, animal and plant breeding.



Automobile workshops

With the highest chemical resistance and mechanical is a reliable solution for workshops and service channels.



Commercial facilities

It will also be perfect for industrial halls, communication routes and even as a minimalist, decorative general lighting in commercial facilities.



Values that help us achieve
our goals through daily work
for our customers



Passion and professionalism

Our company was born out of a fascination with light. Over the years, we have gained knowledge and competences thanks to which we can design and manufacture even the most complex lighting systems.



Inspiration and design

We make sure that our products stand out not only with the best parameters, but also with a unique design. We believe that the space that surrounds us has a real impact on how we feel. With this in mind, we create our products.



Innovation and development

We offer technologically advanced solutions. We are constantly investing in the development of our research center and state-of-the-art production lines. We are growing dynamically together with the advancement of technology.



Sustainable development

We have placed environmental management at the heart of our business, implementing a system that minimizes any negative impact on the environment. We hold BIO Certificate ISO 14001



Lena Lighting production halls in Środa Wielkopolska

MADE IN POLAND

We are a lighting manufacturer present on the market for 36 years, thanks to which we know everything about luminaires and lighting systems: we design, comprehensively test and produce them. We combine practice with modernity.

Advanced production facilities

Our modern infrastructure provides a high level of flexibility and operational efficiency.

Lighting market leader

Every year, we produce millions of luminaires, strengthening our position in the country and in the world.

Innovative design

We use the latest advances in technology to create modern and energy-efficient solutions.

Working with global leaders

We cooperate with leading manufacturers of electrotechnical components, which allows us to implement unique solutions.

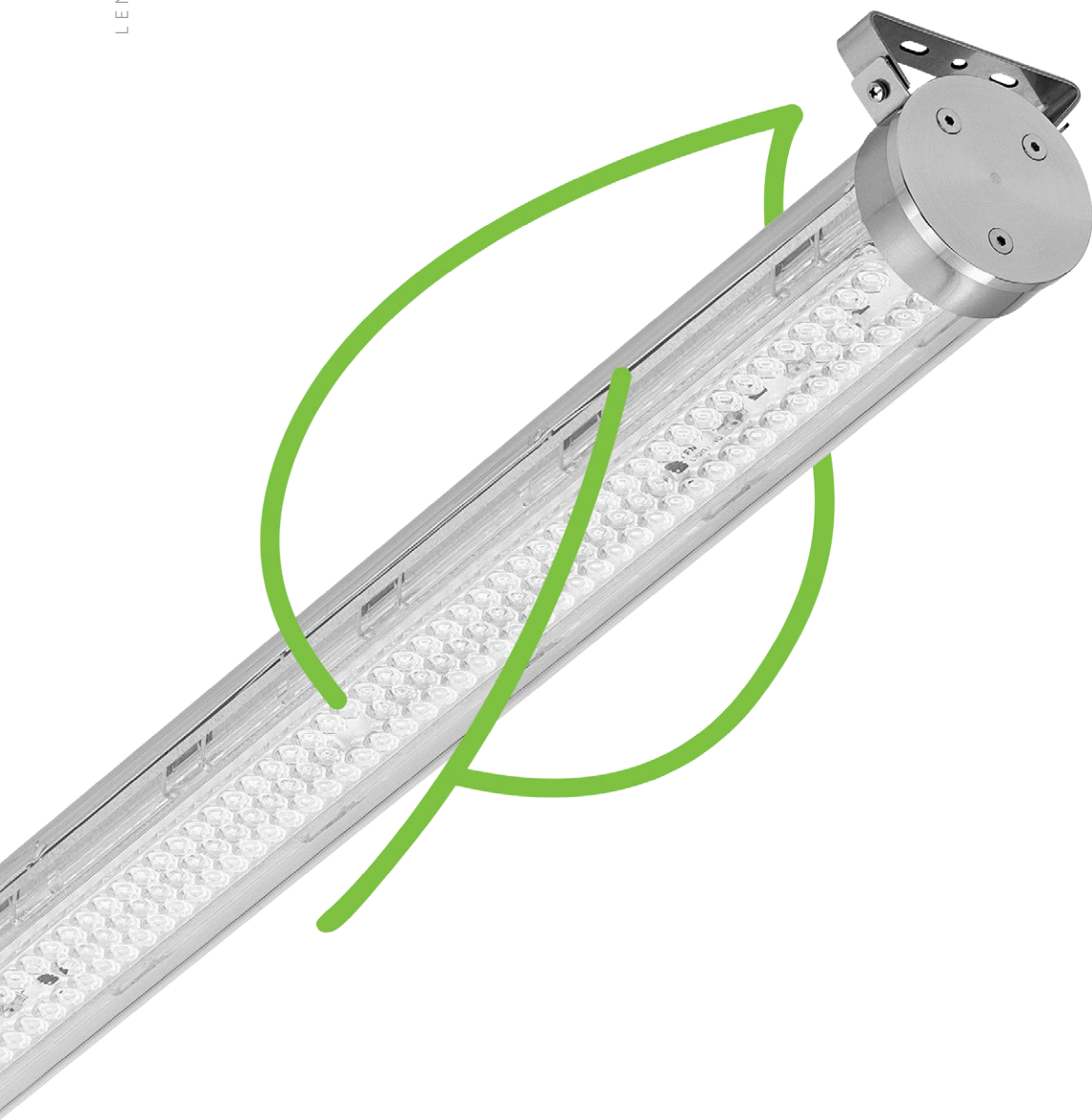
Energy saving and luminous quality

Our technological innovations reduce energy consumption while improving lighting parameters.

Continuous improvement of technology

We are constantly developing our know-how, implementing the latest led technologies and lighting control systems.

36+ years
experience



IT'S REALLY COUNT

We produce according to the highest environmental standards



Awareness of how important environmental behaviors are for us and future generations motivates us to put maximum effort to both offer the highest quality, energy-efficient products, as well as to ensure that the entire process and technology of their production does not have a negative impact on the ecosystem.

Our efforts and their effectiveness have been confirmed by the ISO 14001 certificate. This means that Lena Lighting has successfully implemented an environmental management system. The overriding objective of this system is to create conditions for the functioning of the enterprise in order to minimize the negative impact on the natural environment. We have already succeeded, but we continue and will continue to invest in technology and knowledge, one of the goals of which is to care for the environment.

Lena Lighting S.A.

ul. Kórnicka 52, 63-000 Środa Wielkopolska, Poland

tel. +48 (61) 28 60 333, e-mail: hello@lenalighting.pl

www.lenalighting.com